

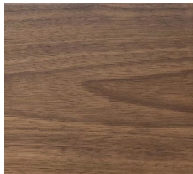
## MATERIALS & FINISHES

DUNBAR selects the finest materials available from around the world. Many of these materials come from natural sources and may vary in their appearance. Finish samples and printed material should be used for reference only, as they do not represent exact matches. Please note that all samples represent standards for an acceptable range established by DUNBAR.

### WOOD

Solid wood and veneers are selected taking into account quality, availability and the overall impact on the environment. DUNBAR makes every effort to balance variations in color, grains and patterns that naturally occur. The following samples outline the wood species and the respective finish colors offered by DUNBAR:

*WOOD SPECIES:* **Walnut**



Clear



#300 Redwood

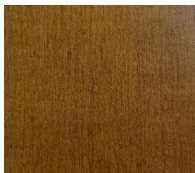


#400 American  
Walnut

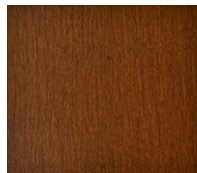


#500 Ebony

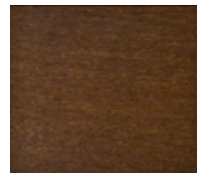
*WOOD SPECIES:* **Maple**



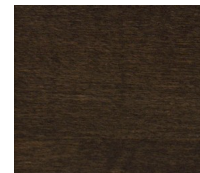
#100 Maple



#200 Cherry



#400 American  
Walnut



#500 Ebony

## METAL

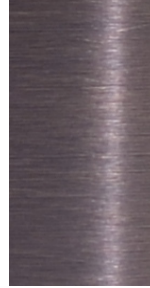
The metal detail on DUNBAR designs serves a combination of structural purpose and visual appeal. The standard metal finishes include the following:



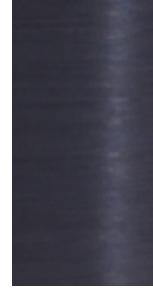
Brushed Aluminum



Matte Brass



Antiqued Brass



Gunmetal

Brushed Aluminum	Legs and metal parts are machined from solid stock and then anodized.
Matte Brass	Legs and metal parts are machined from solid stock, while detail parts are cast. All parts can be sprayed with lacquer on request.
Antiqued Brass	Matte brass parts are exposed to a solution that accelerates the natural oxidation of the metal. The part is then lightly rubbed with steel wool. Antiqued Brass parts can be sprayed with lacquer on request.
Gunmetal	Matte Brass parts are exposed to a solution that accelerates the natural oxidation of the metal. Gunmetal parts can be sprayed with lacquer on request.